



The Jewish Federation  
OF GREATER WASHINGTON



# COMMUNITY REPORT 2018



For an interactive look at the  
impact our community is making,  
visit [shalomdc.org/ourimpact](http://shalomdc.org/ourimpact).

## THE JEWISH COMMUNITY OF GREATER WASHINGTON

# Who We Are...

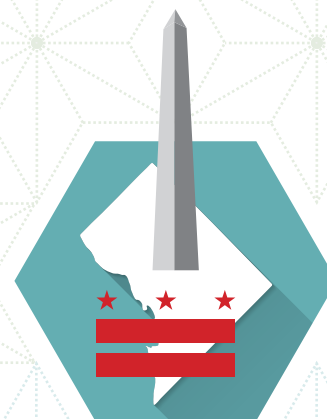
Greater Washington is home to **300,000 Jewish adults and children** in 155,000+ households



We have  
**GROWN** by  
**37%**  
since 2004

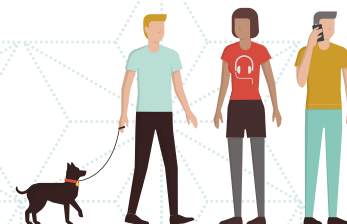


- **The Northern Virginia Jewish population represents 41% of the local Jewish community**  
– 121,500 individuals live in 63,700 households throughout Fairfax, Prince William, and Loudoun Counties, and the cities of Arlington, Alexandria, Fairfax, Falls Church, Manassas, and Manassas Park
- **37% live in Suburban Maryland**
- **22% live in the District of Columbia**



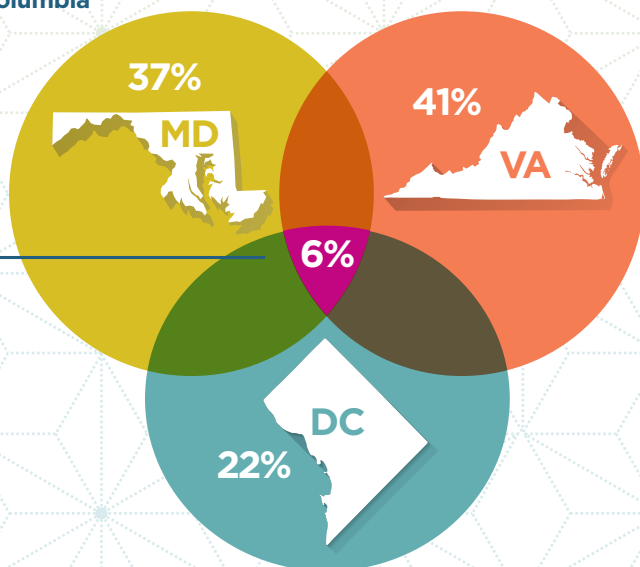
**94% of Jews**

consider the Metro DC area to be their “home base,” despite the perception of DC as a “transient community”



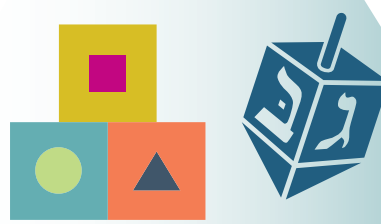
**6% of the total**

Maryland, DC, and Northern Virginia population is Jewish



**85% of children**

in Jewish households with at least one Jewish parent are being raised Jewish



**Educating the Next Generation**

**67% of children**

in grades K-8 are enrolled in a Jewish educational activity, including day schools, part-time schools, and private classes/tutoring



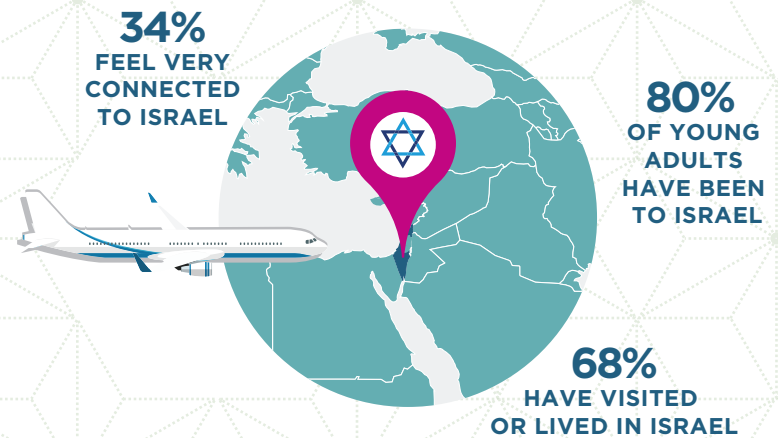
**26% of households**

belong to a synagogue or another Jewish worship community



## Engagement in Jewish Life

- **33% involved** – involved in most aspects of Jewish life
- **18% immersed** – highly engaged in all aspects of Jewish life
- **18% holiday** – participates in holiday activities
- **17% cultural** – participates in cultural and personal activities
- **14% minimal** – little or no involvement in Jewish life



## Connection to Israel

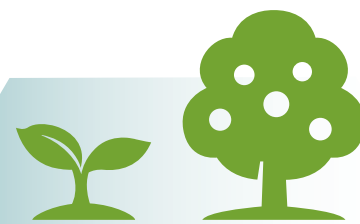
Approximately two-thirds (68%) of Washington-area Jews have been to Israel or have lived there

80% of young adults in Greater Washington have been to Israel

One-third (34%) of Washington-area Jews feel very connected to Israel

**87%** of Jewish adults

made a charitable contribution  
in the past year



We are both  
**OLDER & YOUNGER**

than most American Jewish communities,  
with **more seniors and more adults under  
age 35** than American Jews nationally

## Diversity & Inclusion



**7%**  
LGBTQ

**7%**  
PERSON OF COLOR OR HISPANIC/LATINO



**41%** of Jewish adults

have volunteered in the past month,  
either with Jewish or non-Jewish organizations

## Economic Insecurity

Some members of the Metro DC Jewish community struggle  
with significant economic challenges



**53%** of couples

include someone who does not  
identify as Jewish



**1%**  
POOR OR  
REALLY  
POOR



**5%**  
EXCESSIVE  
FINANCIAL  
CONSTRAINTS  
PREVENTING  
PARTICIPATION  
IN JEWISH LIFE



**10%**  
JUST  
GETTING  
ALONG



**13%**  
NOT  
ENOUGH  
SAVINGS

**18%** of households

include a family member with a  
health limitation or disability



Data from the 2017 Greater Washington Jewish Community Demographic Study, funded by the Morningstar Foundation. The study comes at a pivotal time for our Jewish community—one of the fastest growing Jewish communities in the United States. Conducted by the Cohen Center for Modern Jewish Studies and the Steinhardt Social Research Institute at Brandeis University, the study creates a comprehensive portrait of the characteristics, attitudes and behaviors of Greater Washington's Jewish community.

**View the full study at [shalomdc.org/communitystudy](http://shalomdc.org/communitystudy)**

# Dear Friends,



Gary Berman



Gil Preuss

We invite you to join us in celebrating Jewish Greater Washington. Ours is a large, growing, and engaged Jewish community, and we are blessed to live amongst many of the strongest, most vibrant Jewish organizations and creative leaders in the country.

As a Jewish people, our 3,500 years of tradition, literature, and wisdom connect us as a people and drive us forward. Our core beliefs, that all people are created in God's image and that we have the capacity to transform the world, have elevated our collective aspirations. We envision an open, connected, and vibrant Jewish community that cares for each other, fosters Jewish learning and journeys, embraces Jewish peoplehood and Israel, and acts as a force for good in the world. Together, we are building precisely that.

The Jewish Federation of Greater Washington partners with many individuals and organizations, mobilizing in common purpose to inspire, build, and sustain vibrant Jewish life in a changing world. We are proudly accelerating intentional innovation by bringing together local, national, and global agencies, synagogues, schools, and many other organizations; elevating our vision for what is possible and developing new ways to engage with one another and secure our Jewish future.

In this **2018 Community Report**, we are pleased to shine a spotlight on several members of our community who benefit from the work of Federation and our many partner organizations. These meaningful accomplishments are only possible thanks to your generosity and that of many other community members and Federation donors. We invite you to join us as we continue to build our vibrant community for this generation and beyond in a rapidly changing world.

Whether these pages are your first introduction to our work or you have been a dedicated supporter for decades, we hope you find meaning and motivation in the stories and achievements highlighted here.

By embracing our tradition and accepting the responsibility of shaping the Jewish future, we will continue to build the community to which we aspire.

Sincerely,

Gary Berman  
President

Gil Preuss  
CEO

# Table of Contents

## We Are...

Welcoming	4
Engaging	5
Building	7
Learning	9
Exploring	10
Connecting	11
Caring	13
Securing the Jewish Future	14
Financials	15
Leadership	17
Community Partners	18
Staff	18
Making an Impact	19

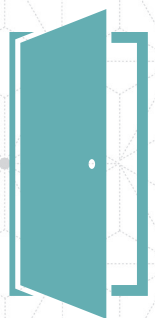
## Vision for Our Community

An open, connected, and vibrant Jewish community that cares for each other, fosters Jewish learning and journeys, embraces Jewish peoplehood and Israel, and acts as a force for good in the world.

## Our Mission

To inspire, build, and sustain vibrant Jewish life in a changing world by mobilizing our community in common purpose, intentional innovation, and effective action.

# WE ARE... Welcoming



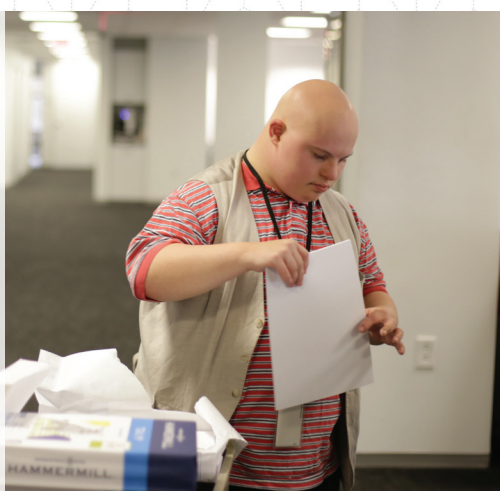
## EVERY MEMBER OF OUR COMMUNITY

Deepening our understanding of who we are begins with listening to each distinct voice that makes up Jewish Greater Washington. Federation and our partners are committed to advancing and fostering inclusion. Through programs and services that welcome, raise awareness, and advocate for the rights of all community members, we grow the ways in which everyone feels invited and encouraged to participate in Jewish life.

### Jacob is working independently

**"I have a mug with my name on it, and a desk. I go to staff meetings. I like my job at Federation. I love being on the team."**

**—Jacob W.,  
MOST™ Intern at  
The Jewish Federation**



Federation proudly supports the Jewish Foundation for Group Homes' Sally and Robert Goldberg Maryland Meaningful Opportunities for Successful Transitions (MOST™) program, which prepares individuals with disabilities for independent, self-sustaining adulthood by providing real world professional experience. This year, Federation was proud to welcome Jacob as our third intern.

### Mindy has found her community



**"GLOE has been a home-base for me—a place where I don't have to choose between my LGBTQ identity and my Jewish identity. The program offerings provide a unique balance of educational, spiritual, and social opportunities, and—most of all—it is a place to find community."**

**—Mindy G., GLOE participant**

The Edlavitch DCJCC, a Federation partner, is home to GLOE—The Kurlander Program for GLBTQ Outreach & Engagement. GLOE engages the local GLBTQ Jewish community through original programming and events, and by fostering a welcoming and inclusive environment for those of all identities.

**46,800**

annual hours of job training empower individuals with differing abilities to join the workforce

**85+**

organizations have utilized Federation's Disability Inclusion Planning Toolkit, a free online guide to inspire all organizations on their inclusion journey

**7,000+**

people from Greater Washington's LGBTQ Jewish community participate in programs and events that foster a welcoming and inclusive community

### Chris and his family feel represented



**"It was incredible to open our PJ Library book and see that it perfectly reflected our interracial and interfaith family. My wife actually broke down and cried with joy when she read through the book and saw our family sitting at the Shabbat table."**

**—Chris S.,  
PJ Library® parent**

Federation proudly brings PJ Library and PJ Our Way to Greater Washington, connecting 7,691 families with young children (ages 0–11) to Jewish life, one another, and our larger community. Each month, children enrolled in these programs receive free Jewish books as a gift from Federation, the Harold Grinspoon Foundation, and other generous donors. Each title is carefully selected to encourage family discussions around Jewish values and traditions. Beyond being a great reason to snuggle up for a bedtime story, PJ Library serves as a catalyst for families to feel at home in our larger community—meeting and coming together with other parents and children for storytime, volunteer opportunities, holiday celebrations, and more.

# WE ARE... Engaging

WITH ONE ANOTHER



To live in an engaged community is to live in a place that offers diverse opportunities to explore Judaism, connect with like-minded people, and act as a force for good in the world. Federation, together with partners across MD, DC, and Northern VA, ensures endless possibilities for meaningful connectivity for all who seek it.

**“Federation has enriched my life by connecting me to mentors in the community, friends with similar values, and empowering leadership opportunities. It’s made me a more engaged citizen of the Jewish community and a more intentional philanthropist. It’s helped root me more permanently in DC, a transient city, by anchoring me in such a strong community.”**



—**Jamie P.**, board member (2015–2018),  
Federation’s Young Leadership

**Nicole is proud to belong to an inclusive community**



**“Drag Queen Havdalah & Storytime at our shul...how times have changed! I am grateful that we can be out and proud within our Jewish community.”**

—**Nicole B.**, member,  
Temple Shalom

**“Community service is something you do for others, but it also feels really good to make small changes and small positive impacts.”**

—**Jess S.**, Co-Chair,  
Sara & Samuel J. Lessans Good Deeds Day and member,  
Jewish Federations of North America’s National Young Leadership Cabinet



Everything But The Turkey with PJ Library®



Sara & Samuel J. Lessans Good Deeds Day



Grand Slam Sunday: Jewish Community Day at Nationals Park

Kendra & Travis are forming new connections



“Honeymoon Israel was one of the best experiences of my life. The connections we both formed with our new Jewish community have reinvigorated my love for my culture and given my husband a confidence in claiming his relationship with Judaism that I only wished was possible.”

—Kendra R., Honeymoon Israel participant

Honeymoon Israel, empowered by funding from Federation, provides trips to Israel for couples with at least one Jewish partner, but the journey does not end when couples return. After the trip, participants are encouraged to build and strengthen their new community of peers. Locally, alumni groups are organizing Chanukah parties, Passover seders, Shabbat dinners, volunteer projects, and more—forging Jewish community and discovering meaningful ways to incorporate Judaism into their lives.

Sarah sees food as the ultimate connector

“Federation’s Jewish Food Experience® is the ultimate connector, bringing together DC-area Jews of all stripes to share their diverse passions for food in creative ways, both online and offline.”

—Sarah N., Food Insecurity Activist and International Blogger



Emily is creating meaning for her Jewish peers



Moishe House, a Federation partner, enables young adults in their 20s to create meaningful, home-based Jewish experiences for themselves and their peers. Moishe House provides rent subsidies and program budgets to its millennial residents, who then use their home to create their ideal Jewish communal space.

“I was in college when I truly began my Jewish journey. I joined a synagogue, studied in Israel, and worked at a Jewish organization, but I was still missing a network of Jewish peers. By living in a Moishe House and organizing innovative and engaging programs for Jewish young adults in Northern Virginia, I have found my community and the missing puzzle piece in my Jewish identity.”

—Emily M., Moishe House Northern Virginia resident

8,000+

members of the community gave back through 150 volunteer opportunities on Federation’s Sara & Samuel J. Lessans Good Deeds Day 2018

1,500+

community members joined Federation at Grand Slam Sunday: Jewish Community Day at Nationals Park in 2018

7,600+

local families with children ages 0–11 receive PJ Library and PJ Our Way books each month

# WE ARE... Building



## JEWISH IDENTITY

Establishing a Jewish identity is a lifelong journey. As we find ourselves more fully immersed in Jewish life, we deepen our connections to fellow community members and build relationships that sustain us through every stage of life. Together with our partners across Greater Washington and around the world, Federation invigorates Jewish life for all community members, offering a multitude of opportunities for connection and for discovering how they can live a life infused with Jewish meaning.

### Cheryl feels supported in raising a Jewish family



For families with young children living in Northern Virginia (NoVa), the j.family ambassadors initiative makes the NoVa Jewish community more welcoming, inviting, and accessible by connecting families to Jewish programming, resources, and to each other. The program is fully funded by Federation and presented in partnership with the JCC of Northern Virginia. It will expand in the coming year to Montgomery County and Washington, DC, in partnership with the Bender JCC of Greater Washington and the Edlavitch DCJCC.

**“When we started a family, we knew almost no one Jewish in Northern Virginia. I had no idea the impact the j.family ambassadors program would make to our lives over the last couple years. The feeling of being welcomed into a Jewish community I didn’t even know existed was so amazing! This program has enriched our lives more than we could have ever imagined.”**

**—Cheryl K.,**  
participant, j.family ambassadors

### Mira is securing her Jewish values as a teen philanthropist



Federation’s Jteen Philanthropy goes beyond a simple *tzedakah* (charity) lesson or fundraising project. By engaging teens in collective philanthropic giving, this program helps youth understand the Jewish obligation of *tzedakah* on a deeper level and provides them with an opportunity to make a direct impact on the world.

**“Throughout my Jteen experience, I have not only learned how to be a philanthropist, but how our Jewish values can influence the way we help others. At Jteen, I was able to channel both my love for helping others and the love for Judaism I carry with me.”**

**—Mira F.,**  
graduate, Jteen Philanthropy

## Establishing Jewish identity in the Baltics

For families from the Jewish communities of post-Soviet Latvia, Lithuania, and Estonia, opportunities to instill strong Jewish identity in their children are limited. Olameinu Mischpacha Baltic Jewish Family Camp, supported by Federation partner the American Jewish Joint Distribution Committee (JDC), offers campers the invaluable chance to take part in a larger Jewish community that teaches Jewish values, observes traditional customs, and celebrates Shabbat.



“Sometimes it is challenging to admit to others that you are Jewish. Being at camp is like having a second family. I learn more and more about Judaism and how to work better with the kids. This summer, I realized that if I try hard enough, I can always connect with each and every one of the *chanichim* (campers).”

—Dan B., counselor,  
Camp Olameinu Mischpacha

4,700+

Jewish teens in grades 6–12 participate in a youth group

18,000

young adults from Greater Washington are building community, strengthening Jewish identity and connecting to Israel through Hillel and Birthright Israel trips

\$97,000

in grants will enable local children to experience Jewish overnight camp for the first time

## Jewish camp is awakening self-discovery



“I never thought I’d learn so much about myself and others in seven weeks. I’ve gained more patience, conflict resolution skills, and understanding of the importance of diversity during this summer—my ninth at camp—than throughout my life.”

—Jojo R., Counselor in Training,  
Capital Camps

## Gallaudet Hillel is engaging Jewish students on campus



“When students have access and exposure to Jewish experiences, they can see a variety of Jewish identities, ways to be involved, and leadership opportunities available to them. Then they’re empowered to connect in the ways most meaningful to them.”

—Rhea M.,  
2015–2017 Board Chair,  
Hillel at Gallaudet University

# WE ARE... Learning



## AT EVERY AGE

Jewish Washingtonians are connecting to their heritage and finding meaning through diverse Jewish learning opportunities. As we grow in Jewish knowledge, we become more curious and engaged members of our family and community. Federation and our partners in Jewish learning are making 3,500+ years of Jewish wisdom accessible and relevant to life in 21<sup>st</sup> century America.

### Vicki's children are learning Jewish values and traditions

Six Federation-supported local Jewish day schools offer educational excellence and substantive Jewish identity-building, based on a strong foundation of Jewish learning and values.



"I am constantly amazed by the ways in which my children show their appreciation and understanding of not only our family's traditions, but also the variety of Jewish traditions celebrated by their friends and the wider community. I thank Gesher for embracing families from such a broad range of Jewish expression and practice."

—Vicki F., parent of Gesher Jewish Day School students

### Robert has become better acquainted with his heritage and culture

Federation partner the Bender JCC of Greater Washington is helping adult learners open new lines of communication.



"I didn't know Hebrew when I began studying at the Bender JCC five years ago, but I wanted to converse with my Israeli granddaughter during visits to Israel. For me, studying Hebrew has been an awakening of Jewish culture, and I have become better acquainted with my heritage. The lessons are also meaningful as I compose music and

sing in the Washington Hebrew Congregation choir, because I have always wanted to understand the words I sing and use in compositions, and the spirit—the 'Jewish soul'—behind the language."

—Robert N., adult learner, Bender JCC

## 750+

local early childhood Jewish educators attend Federation's annual Early Childhood Education Conference to study acclaimed educational approaches and plan yearly curriculum

## \$2 million+

is invested in our community's education system

## 17,600+

children are enrolled in local Jewish preschools, day schools, and congregational schools

### Allie is learning through stimulating conversations

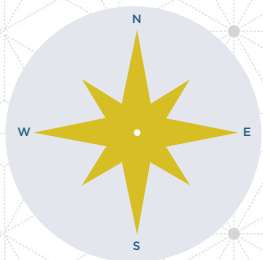


© Photo by Audrey Rothstein Photography (www.audreyrothstein.com)

"There is something special about sitting with people you've never met and discussing a value that links you. No matter how different my opinions were, or how far-fetched my questions, I was always assured that it was okay to think differently and to question, a lesson I wouldn't trade for the world."

—Allie F., graduate, The Margo & Yoram Cohen Family Israel Engagement Fellowship presented by Federation and the Jewish Community Relations Council of Greater Washington

# WE ARE... Exploring



## OUR GLOBAL JEWISH COMMUNITY

Federation's missions make it possible to travel through Israel and around the world with members of our community, building lifelong friendships while experiencing unique, hands-on, and dynamic itineraries. Mission participants return with an enhanced connection to the countries and cities they've explored and a renewed commitment to the Greater Washington Jewish community.



### ISRAEL YOUR WAY



BERLIN  
PRE-TRIP



ECO-ISRAEL/  
OUTDOOR ADVENTURE



ISRAEL INSIDER



FOOD &  
CULTURE



BUSINESS

### WOMEN'S MISSION TO ST. PETERSBURG, RUSSIA



"My first experience with Federation was on an Israel YOUR Way trip. I had never been to Israel, even though my children had done Birthright and I had always been active in the Jewish community. When I went on this trip, I saw Israel in a way that I never could have imagined, and I also learned about what Federation does around the world in terms of helping all kinds of people—not just Jewish people."

—Robin T.,  
Eco-Israel/Outdoor Adventure  
Co-Chair, Israel YOUR Way 2017

### NEXT GEN PHILANTHROPY MISSION TO GREECE & ISRAEL



# WE ARE... Connecting



## TO ISRAEL

In just seven decades, Israel's existence has transformed what it means to be part of the Jewish people, and become central in shaping global Jewish culture. Our American Jewish community continues to celebrate the miracle of growth, prosperity, and survival that is Israel's story. Through educational programs, engaging events, and global travel opportunities, Federation and our partners are building a love for Israel's culture, society, and innovation.

### Federation's Imagine Israel initiative brings Israel to Greater Washington

Each year, Federation proudly supports a cohort of cultural and educational *shlichim* (emissaries) to our synagogues and schools, deepening our relationship with Israel by providing firsthand experiences for community members to connect with Israelis.



"I find it fascinating that no matter where you are, you can find common ground with any community on the basis of Israel. Any Jewish person can find a way to connect to the Jewish homeland,

whether it be through religion, culture or something else. I'm so excited to share an Israel that people can find a connection to."

—Tzachi L., Federation's Senior Shaliach

### Israeli Changemakers like Hadas Goldman are sharing unique perspectives on their culture with Washingtonians

Thousands of ideologically-motivated young adults are moving to underdeveloped towns and cities in Israel's periphery to build innovative, mission-driven communities. These urban pioneers are working to close gaps in their communal social spheres to improve the quality of life for all Israelis.



"One of our biggest challenges—as a network of young people spread throughout Israel—is to be able to share content-based learning and professional training. Thanks to Federation's investment, we are able to bring our entire network

together and provide professional training. This allows us to create the common thread that makes our work more systemic and strategic for years to come."

—Hadas G., Co-Founder and Co-Director, Tarbut Movement

# 1,300

Israeli *shlichim* (emissaries) work at Jewish summer camps across North America, connecting tens of thousands of campers to Israel and Israelis

# 2,000+

listeners have tuned in to Federation's Imagine Israel Podcast

# \$5.5 million

has been invested over 17 years through Federation's partnership with the American Jewish Joint Distribution Committee (JDC) in the PACT Afula (Parents & Children Together) program, propelling hundreds of Ethiopian Israeli preschoolers towards a promising future. This year, the city of Afula will fully and enthusiastically take over the program, continuing the work of closing extensive gaps in language, emotional development, and school readiness.

## Zach is nurturing a love for Israel

Every year, Federation's Young Leadership leads 10-day Birthright Israel trips with young adults, ages 22–26, from the DC area. Birthright offers Jewish young adults the gift of an authentic Israel journey with old and new friends to experience the captivating scenery, cities, flavors, and culture of Israel.



**“My Birthright Israel trip was a priceless opportunity and one that I will always treasure. Every day was packed with opportunities to try new experiences, see historical sites, and embrace Israeli culture. I returned home with a reinvigorated passion for Judaism and a deeper appreciation for Israel and its people.”**

**—Zach L.,**  
*Birthright participant*

## Charles E. Smith Jewish Day School students are learning from their peers in Israel

Thanks to Federation's Imagine Israel initiative, high school students at Charles E. Smith Jewish Day School had the opportunity to learn with and from their peers at a Jewish Israeli school and an Arab Israeli school. The school educational partnership was facilitated by The Abraham Fund Initiatives. The students on both sides of the globe participated in a “Dialogue Through Cinema” course throughout the Spring 2018 semester, in which they explored issues of social identity.



**“I saw this as a symbol of hope for a joined future. It was important to me that the students connect with one another, so they could learn from teenagers like themselves. I believe that, when we get to know each other on a personal level, we are more inclined to listen to others and have empathy, even if we do not think or see things the same way.”**

**—Shelli P.,** *Hebrew teacher,*  
*Charles E. Smith Jewish Day School*

## Our Jewish community celebrates 70 years of Israeli independence



**On Sunday, June 3, 2018, The Jewish Federation of Greater Washington gave community members the opportunity to come together to express their love for Israel. From the exciting Israeli musical acts to the numerous family-friendly projects and enticing giveaways, Israel@70: A Musical Celebration was an amazing experience for more than 2,000 attendees from across our community.**



# WE ARE... **Caring**



## AT HOME AND ACROSS BORDERS

The foundation of a community lies in how it cares for its most vulnerable members. Locally and around the world, Federation, our donors, and our partners compassionately address the immediate and long-term needs of those who may not be able to advocate or provide for themselves.

### We are there for our community, wherever they live



**"I didn't think we would be affected—we hadn't flooded. Then I woke up at four in the morning and saw the water at our doorstep. It was terrifying, and it's been a strain for all of us. We were all raised with the value that we should give back to the community, but I never thought we'd be asking for help. My commitment to give is stronger; I understand the power of the community and the power that Federation has to support all of us. I get it now—we're taking care of our own people."**

*—Margaret L., Houston, TX*

### Nourishing Jewish life in Havana



**"Thanks to the love and the contributions of the American Jewry, we exist. Now, we have a new generation who attend the Sunday school, who are *madrichim* (leaders), who learn about Judaism. They will be the future leaders."**

*—Adela D., President, Cuban Jewish Community*

Since the Cuban revolution nearly 60 years ago, immigration to Israel and the United States has diminished the community and forced its remaining members to struggle to support themselves, both spiritually and financially. After the collapse of the Soviet Union in 1991, many Cubans returned to their religious roots and to synagogues, which were in need of monetary support and resources. Now supported by Federation partner the American Jewish Joint Distribution Committee (JDC), Beth Shalom, Cuba's largest synagogue and Jewish community center, is rebuilding and engaging the next generation of Jewish leaders.

### Jack is living with dignity and independence

**"What we went through and what we saw in Europe as children, it's a trauma that stays with you. It's a thing that never goes away. I don't care what anybody says, nobody can feel what a Holocaust survivor feels. Being part of a Jewish community gives you dignity, and it's important to us Holocaust survivors to know that there's an organization that cares."**

*—Jack W., Holocaust survivor*

Caring for Holocaust survivors is critical to Federation. We are proud to partner with JSSA, with support from our generous donors, to provide critical safety-net services to hundreds



of men and women in our community who survived the Holocaust. This year, 469 survivors in JSSA's Holocaust Survivor Program received life-saving and life-enhancing services to continue living independently and with dignity.

# 100

girls attend Jewish educational institutions in Tunisia, where education for girls is a newer endeavor

# 4,500

Latin Americans participated in Birthright Israel, Masa Israel, and other Israel experiences

# 88,000

annual hours of homecare provided to local Holocaust survivors

# \$500,000+

is addressing the needs of natural disaster victims, including those recovering in the aftermath of Hurricane Harvey

# WE ARE... Securing



## THE JEWISH FUTURE

Jewish tradition teaches us that it is our responsibility to make the world a better place for future generations. Federation's United Jewish Endowment Fund (UJEF) partners with members of the community to achieve their philanthropic vision. Through UJEF's planned giving and fund options, donors can make gifts that fit their financial goals and focus their charitable giving on the community issues and organizations most important to them. UJEF donors shape and improve Jewish life for generations. Learn more at [shalomdc.org/endowment](http://shalomdc.org/endowment)

### Yvonne is passing on her family values

"By endowing my Federation Lion of Judah gift, I am able to link the past, the present and the future, and continue my family's tradition of giving back to the community. At the same time, I hope I'm passing on these values to my children, because what better legacy is there?"

— Yvonne D., Lion of Judah

The strength and vitality of women's philanthropy continues through the Lion of Judah Endowment (LOJE). Today, as we celebrate **25 years of the Lion of Judah Endowment**, more than 80 women in Greater Washington and 3,800 worldwide have endowed their gifts, representing more than \$620 million in assets. **Learn more at [shalomdc.org/loje25](http://shalomdc.org/loje25)**



### Ways money comes in...



GIFTS OF CASH OR APPRECIATED ASSETS



CHARITABLE REQUESTS



LIFE INCOME PLANS



ACORN FUNDS



CHARITABLE LEAD TRUSTS



KEY DONOR LIFE INSURANCE PROGRAM



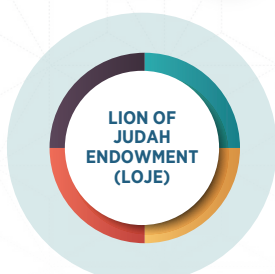
PRIVATE EQUITY OR REAL ESTATE



RETIREMENT PLAN ASSETS



### Ways money is distributed...



### Diane is investing in the next generation

"The transition between college and the 'real world' is a crucial one for millennials to connect to one another and to Judaism, which is why I support the Jewish Millennial Engagement Project (JMEP). Through Federation's UJEF Matching Grants Program, I've been able to double my investment in this important initiative, ensuring that the next generation of Jewish adults are able to establish deep and meaningful relationships."

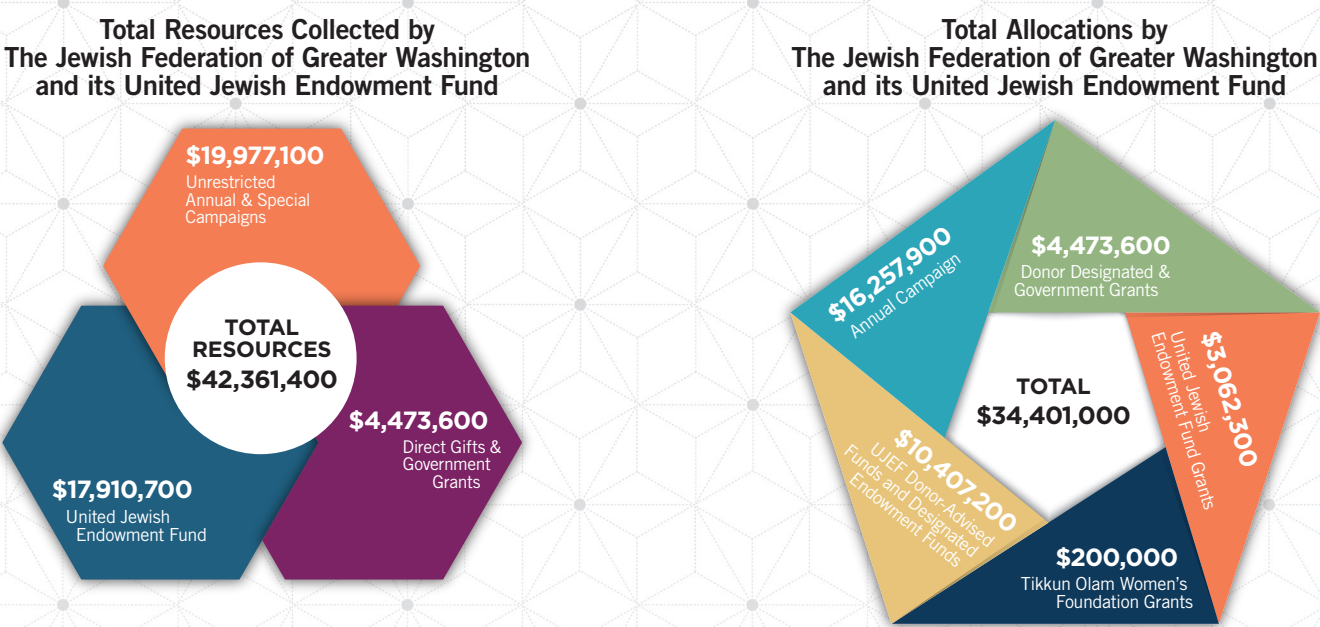
— Diane S., JMEP Funder,  
in partnership with Federation's  
UJEF Matching Grants Program

FEDERATION

Financials

FEDERATION FUNDING & ALLOCATIONS FINANCIAL SNAPSHOT

Through your generosity, **\$42,361,400** in collected resources will enable Federation and the Greater Washington community to help those in need, and to build and sustain vibrant Jewish life in a changing world. Distributions totaling **\$34,401,000** from Federation’s Annual Campaign, the United Jewish Endowment Fund (UJEF) from all sources, donor designated gifts, government grants and the Tikkun Olam Women’s Foundation will support programs and services locally, in Israel, and around the world.



FUNDING & ALLOCATIONS SNAPSHOT

Fiscal Year 2018–2019

LOCAL ALLOCATIONS Agency/Program	Annual Campaign	Donor Designated & Gov't Grants	UJEF Grants	Tikkun Olam Women's Foundation Grants	TOTAL
Bender JCC of Greater Washington	\$ 774,100	\$ 119,500	\$ 19,300		\$ 912,900
Campuses/Hillels	\$ 232,000	\$ 2,500			\$ 234,500
Capital Camps and Retreat Center (CCRC)	\$ 120,100	\$ 10,000			\$ 130,100
Day Schools	\$ 1,352,000				\$ 1,352,000
Edlavitch JCC of Washington DC (EDCJCC)	\$ 399,400	\$ 63,300	\$ 30,000		\$ 492,700
Jewish Coalition Against Domestic Abuse (JCADA)	\$ 49,700			\$ 15,000	\$ 64,700
Jewish Community Center of Northern Virginia (JCCNV)	\$ 326,600				\$ 326,600
Jewish Community Relations Council (JCRC)	\$ 603,000	\$ 14,800	\$ 35,300		\$ 653,100
Jewish Council for the Aging (JCA)	\$ 299,900	\$ 1,000			\$ 300,900
Jewish Foundation for Group Homes (JFGH)	\$ 189,100	\$ 7,000	\$ 51,300		\$ 247,400
Jewish Historical Society of Greater Washington	\$ 30,000	\$ 6,700			\$ 36,700
Jewish Social Service Agency (JSSA)	\$ 949,800	\$ 448,300			\$ 1,398,100
Moishe House	\$ 25,000				\$ 25,000
Sulam	\$ 25,000				\$ 25,000
Youth Group Grants	\$ 83,200		\$ 100,000		\$ 183,200
COMMUNITY PROJECTS					
Addiction Prevention and Recovery Program		\$ 15,000			\$ 15,000
Adult Learning	\$ 25,000		\$ 185,000		\$ 210,000
Asian Pacific Islander Domestic Violence Resource Project				\$ 12,000	\$ 12,000
Avodah				\$ 12,000	\$ 12,000
Campus Security	\$ 354,900	\$ 25,000			\$ 379,900
Coming of Age (COA) MD	\$ 7,700	\$ 272,600	\$ 12,700		\$ 293,000
Coming of Age (COA) VA	\$ 19,500		\$ 82,400		\$ 101,900
Community Matching Gifts Program			\$ 80,000		\$ 80,000
Emergency Reserve Fund			\$ 33,300		\$ 33,300
Federation's Department of Jewish Life & Learning	\$ 546,000	\$ 285,700			\$ 831,700
Federation's Jconnect	\$ 236,800	\$ 600			\$ 237,400
Federation's Jewish Food Experience®	\$ 30,000	\$ 32,300	\$ 50,000		\$ 112,300
Florence Crittenton Services of Greater Washington				\$ 10,000	\$ 10,000
Grand Slam Sunday		\$ 12,000			\$ 12,000
Honeymoon Israel			\$ 80,000		\$ 80,000
Initiative in Congregational Education	\$ 56,000				\$ 56,000
Interfaith Initiatives Grants Pool	\$ 100,000	\$ 1,000			\$ 101,000
Israel Engagement	\$ 51,900	\$ 1,700			\$ 53,600
Israel Quest	\$ 20,900				\$ 20,900
Jewish Millennial Engagement Project		\$ 37,200			\$ 37,200
j.family ambassadors	\$ 75,000		\$ 192,000		\$ 267,000
Jewish Women's Renaissance Project		\$ 20,000			\$ 20,000
Jews United for Justice				\$ 15,000	\$ 15,000
Jteen Philanthropy			\$ 40,000		\$ 40,000
One Happy Camper	\$ 97,200	\$ 15,000			\$ 112,200
PJ Library®	\$ 97,000	\$ 195,200			\$ 292,200
Sacred Spaces				\$ 18,000	\$ 18,000
Sara & Samuel J. Lessans Good Deeds Day		\$ 22,000			\$ 22,000
Sisterhood of Salaam Shalom				\$ 12,000	\$ 12,000
Sunflower Bakery		\$ 10,000			\$ 10,000
Teen Israel Engagement Fellowship		\$ 25,500			\$ 25,500
Tahirih Justice Center				\$ 20,000	\$ 20,000
Tikkun Olam Women's Foundation		\$ 179,400			\$ 179,400
Young Adult & Birthright Follow Up		\$ 165,600			\$ 165,600
TOTAL LOCAL ALLOCATIONS	\$ 7,176,800	\$ 1,988,900	\$ 991,300	\$ 114,000	\$10,271,000

ISRAEL & OVERSEAS ALLOCATIONS Agency/Program	Annual Campaign	Donor Designated & Gov't Grants	UJEF Grants	Tikkun Olam Women's Foundation Grants	TOTAL
American Jewish Joint Distribution Committee	\$ 375,700	\$ 37,900	\$ 93,400		\$ 507,000
Jewish Agency for Israel	\$ 272,100	\$ 1,115,300			\$ 1,387,400
Overseas Core Allocation	\$ 3,028,200				\$ 3,028,200
World ORT	\$ 19,600				\$ 19,600
COMMUNITY PROJECTS					
Adva Center				\$ 14,000	\$ 14,000
American Friends of Herzog Hospital		\$ 43,000			\$ 43,000
Anu – Making Change				\$ 10,000	\$ 10,000
Association for Civil Rights in Israel (ACRI)				\$ 14,000	\$ 14,000
Bialik Rogozin School		\$ 5,000			\$ 5,000
Dror Israel			\$ 140,000		\$ 140,000
Eretz Ir			\$ 50,000		\$ 50,000
Garin Ometz Akko		\$ 12,100			\$ 12,100
Haifa Rape Crisis Center				\$ 3,000	\$ 3,000
Imagine Israel	\$ 212,800				\$ 212,800
Israel Gay Youth	\$ 38,700				\$ 38,700
Israel Hofsheet	\$ 40,000				\$ 40,000
Israel Religious Expressions Platform (iRep)	\$ 25,000				\$ 25,000
Israel Venture Network		\$ 40,000			\$ 40,000
Israel Women's Network				\$ 14,000	\$ 14,000
Israel Council on Youth Movements			\$ 150,000		\$ 150,000
Kayan Feminist Organization				\$ 14,000	\$ 14,000
Mahalach Foundation			\$ 11,300		\$ 11,300
Network of Community Centers in Beit Shemesh – Zinman Matnas	\$ 135,100	\$ 12,000			\$ 147,100
Ruach Hadasha		\$ 5,000			\$ 5,000
Shahaf Foundation			\$ 150,000		\$ 150,000
SHALVA, the Association for Mentally and Physically Challenged Children in Israel			\$ 11,900		\$ 11,900
Shutaf Inclusion Camp			\$ 30,000		\$ 30,000
Social Venture Fund for Jewish-Arab Equality and Shared Society	\$ 50,000	\$ 25,000			\$ 75,000
Sunrise Day Camp			\$ 20,000		\$ 20,000
Tarbut			\$ 40,000		\$ 40,000
Totzeret Ha'aretz		\$ 10,000	\$ 50,000		\$ 60,000
Together Beyond Words				\$ 3,000	\$ 3,000
UJEF Research			\$ 10,000		\$ 10,000
We Power				\$ 14,000	\$ 14,000
TOTAL ISRAEL & OVERSEAS ALLOCATIONS	\$ 4,197,200	\$ 1,305,300	\$ 756,600	\$ 86,000	\$ 6,345,100

NATIONAL ALLOCATIONS	Annual Campaign	Donor Designated & Gov't Grants	UJEF Grants	Tikkun Olam Women's Foundation Grants	TOTAL
70 Faces Media	\$ 17,700				\$ 17,700
HIAS (Hebrew Immigrant Aid Society)	\$ 7,300				\$ 7,300
Hillel International	\$ 34,300				\$ 34,300
Inter-Agency Task Force on Israeli Arab Issues	\$ 5,000				\$ 5,000
JCC Association of North America	\$ 23,100				\$ 23,100
Jewish Council for Public Affairs	\$ 22,200				\$ 22,200
Jewish Federations of North America	\$ 846,800	\$ 57,600			\$ 904,400
Birthright Israel Foundation Israel Action Network Special Programs and Disaster Relief	\$ 207,000	\$ 41,300			\$ 248,300
	\$ 27,000				\$ 27,000
		\$ 453,600			\$ 453,600
Jewish War Veterans of the United States of America	\$ 2,500				\$ 2,500
JPRO Network	\$ 12,500				\$ 12,500
National Coalition Supporting Eurasian Jewry	\$ 4,300				\$ 4,300
Network of Jewish Human Service Agencies	\$ 2,500				\$ 2,500
TOTAL NATIONAL ALLOCATIONS	\$ 1,212,200	\$ 552,500	\$ 0	\$ 0	\$ 1,764,700

FEDERATION sponsored PROGRAMMING & ADMINISTRATION	\$ 3,671,700	\$ 626,900	\$ 1,314,400	\$ 0	\$ 5,613,000
---	--------------	------------	--------------	------	--------------

TOTAL ALLOCATIONS BY AGENCY/PROGRAM	\$16,257,900	\$ 4,473,600	\$ 3,062,300	\$ 200,000	\$23,993,800
-------------------------------------	--------------	--------------	--------------	------------	--------------

FEDERATION

Leadership

EXECUTIVE COMMITTEE

**Gary Berman**  
President

**Mark A. Levitt**  
Vice President for Financial Resource Development

**Jocelyn B. Krifcher**  
Vice President for Strategic Planning & Allocations<sup>1</sup>, Local

**Ron Kaplan**  
Vice President for Strategic Planning & Allocations<sup>1</sup>, Israel & Overseas

**Stuart Kaswell**  
Vice President for Finance & Treasurer

**Jane Shichman**  
Vice President for Leadership & Volunteer Development

**Abby S. Cherner**  
Vice President for Marketing & Engagement<sup>2</sup>

**Robin Hettleman Weinberg**  
Vice President for Women’s Philanthropy

**Mitch Malasky**  
Vice President for Young Leadership

**Rick Zitelman**  
Vice President at Large

**Dan Conston**  
Secretary

**Norman R. Pozez**  
President, United Jewish Endowment Fund

**Scott Brown**  
Presidential Appointee

**Neil Gurvitch**  
Presidential Appointee

**Liza Levy**  
Past President

**Robert Zahler**  
Past President

**Gil Preuss**  
Executive Vice President & CEO

**Paul S. Berger**  
Arnold & Porter LLP, Counsel

<sup>1</sup>Known in bylaws as Community & Global Impact  
<sup>2</sup>Known in bylaws as Marketing

BOARD OF DIRECTORS

2018–2019

Rabbi Nissan Antine  
Brian Ashin  
Vivian Bass  
Emily Benovitz  
Glenn Benson  
Joshua Bernstein  
Cookie Hymer Blitz  
Heidi Brodsky  
Barbara Brown  
Bradley A. Buslik  
Natalie Cantor  
Johanna Chanin  
Gerald Charnoff  
Fed Cohen  
Jeffrey Cohen  
Marcella Cohen  
Jason Conway  
Eva Malka Davis  
Fred Diamond  
Jeffrey Distenfeld  
Amy Dweck  
Ralph S. Dweck  
Peter Federowicz  
Anne Feinberg  
Carly Finkelstein  
Vicki Fishman  
Mike Flyer  
Alan Freeman  
Matthew Friedson  
Toby Frank  
Morgan Genderson  
Ronald Glancz\*  
Eliot Goldberg  
Hillel Goldberg  
Joel Goldhammer  
Laura Goldman  
Louis Goodman  
Carol Gordon  
Jill Granader  
Marci Handler  
Kathy Ingber  
Kerry Iris  
Mark Kahan  
Candace G. Kaplan  
Lawrence Kaplan  
Leslie A. Kaplan  
Samuel Kaplan  
Sherry Kaswell  
Sheldon Klein

William Kreisberg  
Shelly Kupfer  
Steven Laufer  
Dr. Stuart Lessans  
Hank Levine  
Dr. Michael Levine  
Mark Lezell  
Judah Lifschitz  
Yelena Barakh Lingel  
Jodi Macklin  
Louis Mayberg  
Alan Meltzer  
Dan Mendelson  
M. Howard Morse  
Benjamin A. Nussdorf Dr.  
Ronald A. Paul  
Kim Price  
Daphna Raskas  
Rabbi Adam Raskin Meryl  
B. Rosenberg Jeffrey S.  
Rum  
Jonathan Sachs  
Deborah Ratner Salzberg  
Janis Schiff  
Marissa Schlaifer  
Susan Schor  
Kenneth Schwartz Raanan  
Shames  
Rabbi Susan N. Shankman  
Jessica Sher  
Ben Shlesinger  
David Sloan  
Samantha Smith  
Miriam Smolen  
Ashley Steinberg  
Rabbi Shira Stutman  
Stuart Tauber  
Edward Tolchin  
Eric Wachter  
Ellen Kagen Waghelstein  
Edward R. Weiss  
Joanne Wyman  
David Yaffe  
Cindy Zitelman

PAST PRESIDENTS

Dr. Seymour Alpert\*  
Paul S. Berger

Herschel W. Blumberg\*  
Rabbi Isadore Breslau\*  
Joel Breslau  
David J. Butler  
Morris Cafritz\*  
Joseph Cherner\*  
Melvin S. Cohen\*  
Jerome J. Dick\*  
Dede Feinberg  
Leopold V. Freudberg\*  
Michael C. Gelman  
Susie Gelman  
Dr. Leon Gerber\*  
The Honorable Joseph B. Gildenhorn  
Hymen Goldman\*  
Edward H. Kaplan  
Irene R. Kaplan  
Edmund I. Kaufmann\*  
Joel S. Kaufmann\*  
Abraham S. Kay\*  
Jack Kay\*  
Stuart S. Kurlander  
Jac J. Lehrman\*  
Liza Levy  
Philip N. Margolius  
Phyllis G. Margolius\*  
Joseph Ottenstein\*  
Morris Rodman\*  
Ivan Michael Schaeffer  
Rabbi Matthew H. Simon  
Isador S. Turover\*  
Robert Zahler

HONORARY PRESIDENTS

N. M. Cohen\*  
Charles E. Smith\*

HONORARY BOARD MEMBERS

Seymour S. Abensohn\*  
Norman Bernstein  
Dr. Morris Cohen  
Richard England\*  
Saul I. Stern\*  
Bernard S. White\*

FEDERATION’S UNITED JEWISH ENDOWMENT FUND LEADERSHIP

Norman R. Pozez  
*President*

TRUSTEES

Daniel H. Abramowitz  
Gary Berman  
Dr. Sara Cohen  
Yvonne Schlafstein  
Distenfeld  
Kevin Fishkind  
Eileen Frazier  
Norman Freidkin  
Dr. Michael Friedman  
Michael Gildenhorn  
Jerry Greenspan

Neil Gurvitch  
Jerry Herman  
Stuart Kaswell  
William Kreisberg  
Jocelyn B. Krifcher  
Jonathan Lerner  
Liza Levy  
Philip N. Margolius  
Lawrence Nussdorf  
Dr. Ronald A. Paul  
Susan Pittleman  
Gil Preuss  
Meryl Rosenberg  
Janis Schiff  
Rhea Schwartz

Mindy Strelitz  
Stuart Tauber  
David Wexler

TRUSTEES EMERITI

Paul S. Berger  
Norman Bernstein  
Joel Breslau  
Sheldon S. Cohen\*  
The Honorable Joseph B. Gildenhorn  
Alan L. Meltzer

*\*of Blessed Memory*

# FEDERATION'S COMMUNITY Partners

Federation thanks our partner agencies and programs for their collaboration and commitment in addressing the needs of our Jewish community.

## LOCAL SERVICE NETWORK

- Bender JCC of Greater Washington
- Capital Camps & Retreat Center
- Charles E. Smith Life Communities\*
- Edlavitch JCC of Washington DC
- Garden of Remembrance\*
- Jewish Coalition Against Domestic Abuse
- Jewish Community Center of Northern Virginia
- Jewish Community Relations Council of Greater Washington
- Jewish Council for the Aging
- Jewish Foundation for Group Homes
- Jewish Historical Society of Greater Washington
- Jewish Social Service Agency
- Moishe House
- Sulam

## LOCAL COMMUNITY PROGRAMS

- Coming of Age (MD and VA)
- Federation's Department of Jewish Life & Learning
- Federation's Jconnect
- Federation's Jewish Food Experience®
- Federation's Jteen Philanthropy Program
- GatherDC
- Honeymoon Israel
- Initiative in Congregational Education
- Interfaith Initiatives Grants Pool

- Israel at 70 Celebration
- Interfaith Engagement
- Imagine Israel
- Israel Quest
- j.family ambassadors
- Jewish Leadership Institute
- Jewish Millennial Engagement Project
- Jewish Rock Radio
- Jewish Women's Renaissance Project
- Jews United for Justice
- One Happy Camper
- One Table
- PJ Library
- Tzedek DC

## JEWISH DAY SCHOOLS

- Berman Hebrew Academy
- Charles E. Smith Jewish Day School
- Gesher Jewish Day School of Northern Virginia
- Milton Gottesman Jewish Day School of the Nation's Capital
- The Torah School of Greater Washington
- Yeshiva of Greater Washington

## COLLEGE CAMPUSES AND HILLELS

- American University
- College of William and Mary
- Gallaudet University
- George Mason University
- George Washington University

- Georgetown University
- James Madison University
- University of Maryland
- University of Mary Washington
- University of Virginia
- Virginia Tech

## LOCAL YOUTH GROUPS

- BBYO
- B'nei Akiva
- Habonim Dror
- National Conference of Synagogue Youth
- North American Federation of Temple Youth Mid-Atlantic Region
- United Synagogue Youth
- Tzofim

## ISRAEL & OVERSEAS NETWORK

- American Jewish Joint Distribution Committee
- Jewish Agency for Israel
- World ORT

## ISRAEL & OVERSEAS PROGRAMS

- Dror Yisrael
- Eretz Ir
- Israel Council on Youth Movements
- Israel Gay Youth
- Israel Hofsheets
- Israel Religious Expressions Platform (iRep)

- Mahalach Fund
- Network of Community Centers in Beit Shemesh-Zinman Matnas
- Rimon School of Music
- Ruppin Academic Center
- Shahaf Foundation
- SHALVA, the Association for Mentally and Physically Challenged Children in Israel
- Shutaf Inclusion Camp
- Social Venture Fund for Jewish-Arab Equality and Shared Society
- Sunrise Day Camp
- Tarbut

## NATIONAL AGENCIES

- 70 Faces Media
- Birthright Israel Foundation
- HIAS
- Hillel International
- Inter-Agency Task Force on Israeli-Arab Issues
- Israel Action Network
- JCC Association
- Jewish Council for Public Affairs
- The Jewish Federations of North America
- Jewish War Veterans of the United States of America
- JPRO Network
- National Coalition Supporting Eurasian Jewry
- Network of Jewish Human Service Agencies

*\*Non-funded Agencies*

# FEDERATION Staff

Sergio Alfaro  
Melissa Amster  
Julie Anane  
Ashley Appelman  
Sydney Axelrod  
Hila Balely  
Esther Balsamo  
Alexis Bock Robbins  
Kira Borman  
Ariel Brickman  
Zach Briton  
Caroline Cohen  
Shaina Colvin  
Paula Correa-Silver  
Diane Cutler Green  
Sheri Deck  
Jennifer Diamond  
Jessica Dishell  
PJ Edelman

Lillian Fields  
Eileen Frazier  
Ruth Gnatt  
Elizabeth Goldstein  
Alice Grillo  
Lisa Handelman  
Monica Herman  
Judd Holzman  
Chuck Hozdic  
Marla Hurwitz  
Steffanie Jackson  
Karen Jacobs  
Lynn Jatlow  
Brian Johnson  
Malki Karkowsky  
Karen Katzman  
Ned Konin  
Danna Koren  
Linda Kraner

Barry Krasner  
Beri Kravitz  
Tzachi Levy  
Adrienne Malickson  
Janet Maman  
Max Mancher  
Naomi Mandel  
Benita Marcus  
Emily Mathae  
Alison Mershon  
Mark Miles  
Dani Mzhen  
Abby Newburger  
Anabela Ngaguedeba  
Gil Preuss  
Sarah Rabin Spira  
Rickey Robinson  
Rose Rogers  
Shera Sacks

Kyri Schafer  
Natasha K Sheme  
Sharon Sherry  
Daniel Siegeltuch  
Yoav Stein  
Rabbi Gil Steinlauf  
Jackie Subar  
Latrece Thorpe  
Alison Turek  
Samantha Vinokor-Meinrath  
Michelle Wachtel  
Jessica Warren  
Avi West  
Isabella Yusimova  
Stacye Zeisler



Welcoming  
every member  
of our  
community

**46,800**

annual hours of job  
training empower  
adults with differing  
abilities to join  
the workforce.

**7,000+**

people from the local  
LGBTQ Jewish community  
participate in programs  
and events.

**29%**

of PJ Library book  
recipients are interfaith  
families, relying on PJ to  
help infuse their lives  
with Jewish values.

Learning at  
every age

**4,700+**

teens enjoy Jewish  
programming and  
leadership development  
through local  
youth groups.

**\$2,000,000+**

is invested in our  
community's  
education system.



## We Are Making an Impact

Thank you to our dedicated volunteers, committed leaders, professional staff, generous donors, corporate sponsors, and community partners. Together, we are building an open, connected, and vibrant Jewish community, strengthening and sustaining Jewish life, and addressing critical needs locally and around the world.

Engaging  
with one  
another

**8,000+**

volunteered on Federation's  
Sara & Samuel J. Lessans  
Good Deeds Day.

**170**

families have met with  
J.Family ambassadors to  
connect to a network  
of Jewish families.

**\$1,270,000+**

in funding is allocated  
to agencies and  
programs serving  
Northern Virginia.

Building  
Jewish  
identity

**18,000+**

young adults are  
finding community and  
connecting to Israel  
through Hillel and  
Birthright Israel trips.



**\$97,000**

in grants enable local  
children to experience  
Jewish overnight camp  
for the first time.



Connecting  
to Israel

**2,000+**

listeners have  
tuned in to  
Federation's Imagine  
Israel Podcast.

**11**

congregational *shlichim*  
(emissaries) will serve  
our local schools  
and synagogues  
in 2018-19.



Caring at  
home and  
across  
borders

**88,000**

annual hours of  
homecare are  
provided to local  
Holocaust survivors.

**\$500,000+**

is addressing the  
needs of natural  
disaster victims.

**29,000**

Jewish families across  
Eastern Europe receive  
life-saving services,  
food and medication.



The Jewish Federation  
OF GREATER WASHINGTON  
**SHALOMDC.ORG**