



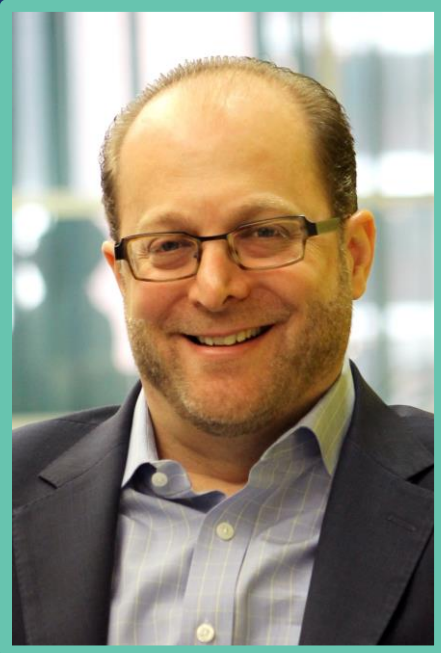
The Jewish Federation
OF GREATER WASHINGTON

The Close Up

Thank you for being here!
The Close Up will begin shortly.



The Jewish Federation
OF GREATER WASHINGTON

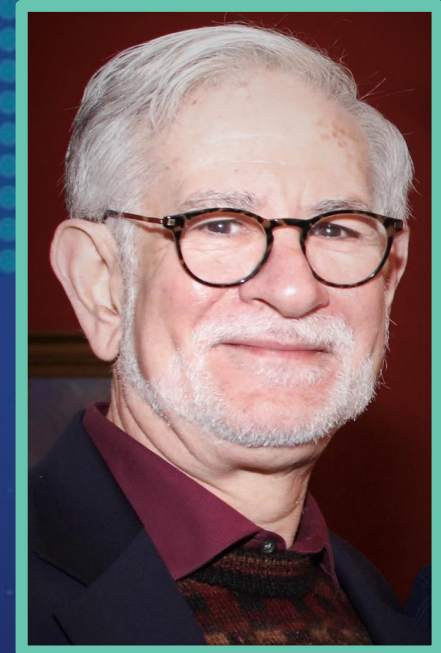


Growing Old: What's Next for our Community's Aging Population?

Featuring

Todd Schenk, Chief Executive Officer,
Jewish Social Service Agency

David Gamse, Chief Executive Officer,
Jewish Council for the Aging





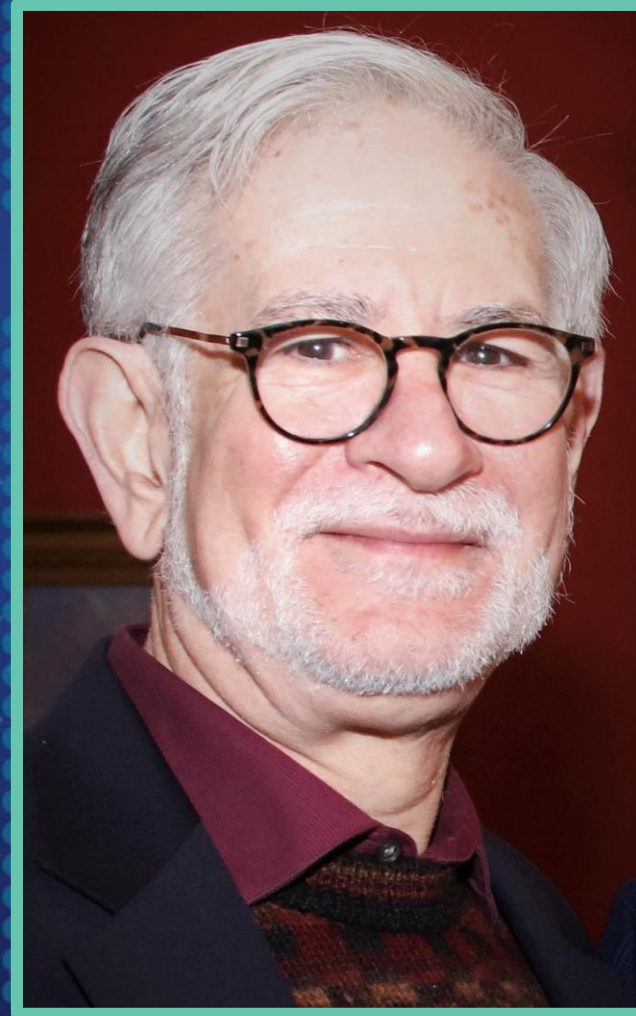
The Jewish Federation
OF GREATER WASHINGTON

Shari Merrill,
Chief Impact Officer
The Jewish Federation of
Greater Washington



About Me: David Gamse

- Gerontologist who has represented U.S. policy on aging at international conferences in Israel, Canada, and elsewhere.
- Has led JCA for 30 years.
- Previously directed the development of AARP's educational and service programs, and their marketing nationwide.
- Later, founded and directed AARP programs for mid-life and older workers.



What We Do



- The Jewish Council for the Aging helps older adults live as independently as possible, for as long as possible, while building bridges between people of different generations.
- In 1973, it became the first agency that The Jewish Federation (then UJA) created.



What We Do

JCA programs...

- Help older adults find local programs and services
- Facilitate learning and growth
- Assist with mobility
- Help older adults find employment
- Forge intergenerational connections
- Connect the elderly to adult day programs and caregiver support groups
- Shatter stereotypes about growing older



Four Kinds of Aging

Chronological

**Social/
Psychological**

Biological

Comparative

Ageism



In the
workplace

In the
marketplace

In
volunteerism

In our
**Jewish
community**

We learn it.

In most cases, intergenerational warfare is a myth.



About Me: Todd Schenk

- Grown JSSA by 75% in five years as CEO.
- Embedded JSSA services in many community sites to make care more accessible.
- Has worked in Jewish family service organizations for 25 years.
- Clinical (Masters in Counseling Psychology) and Business (MBA) training.



What We Do



JSSA is a health and social wellness agency that provides expert caring to our neighbors across the region.

Since 1894, JSSA has supported the Metro DC community.

Recently, JSSA has:

- Helped Holocaust survivors and other older adults age independently in their homes
- Supported children in taking confident steps forward
- Enabled people living with life-limiting illnesses to live with dignity and comfort
- Guided our neighbors through a broad range of life's consequential moments

The JSSA logo is located in the bottom right corner. It features the lowercase letters "jssa" in a serif font. The letter "j" is blue, while the letters "ssa" are black.

Demographics and Trends



Silver Tsunami



Family Sprawl



Aging in Place

National Programs Serving Local Seniors



Educational Programs



Benefits Check-up



Tip Sheets



Kinds of Programs

*Many local programs are senior-specific.
Other senior programs are open to all.*

**College and
community
college courses**

VERSUS

**Programs like
OASIS**

Key Players in Jewish Aging Locally

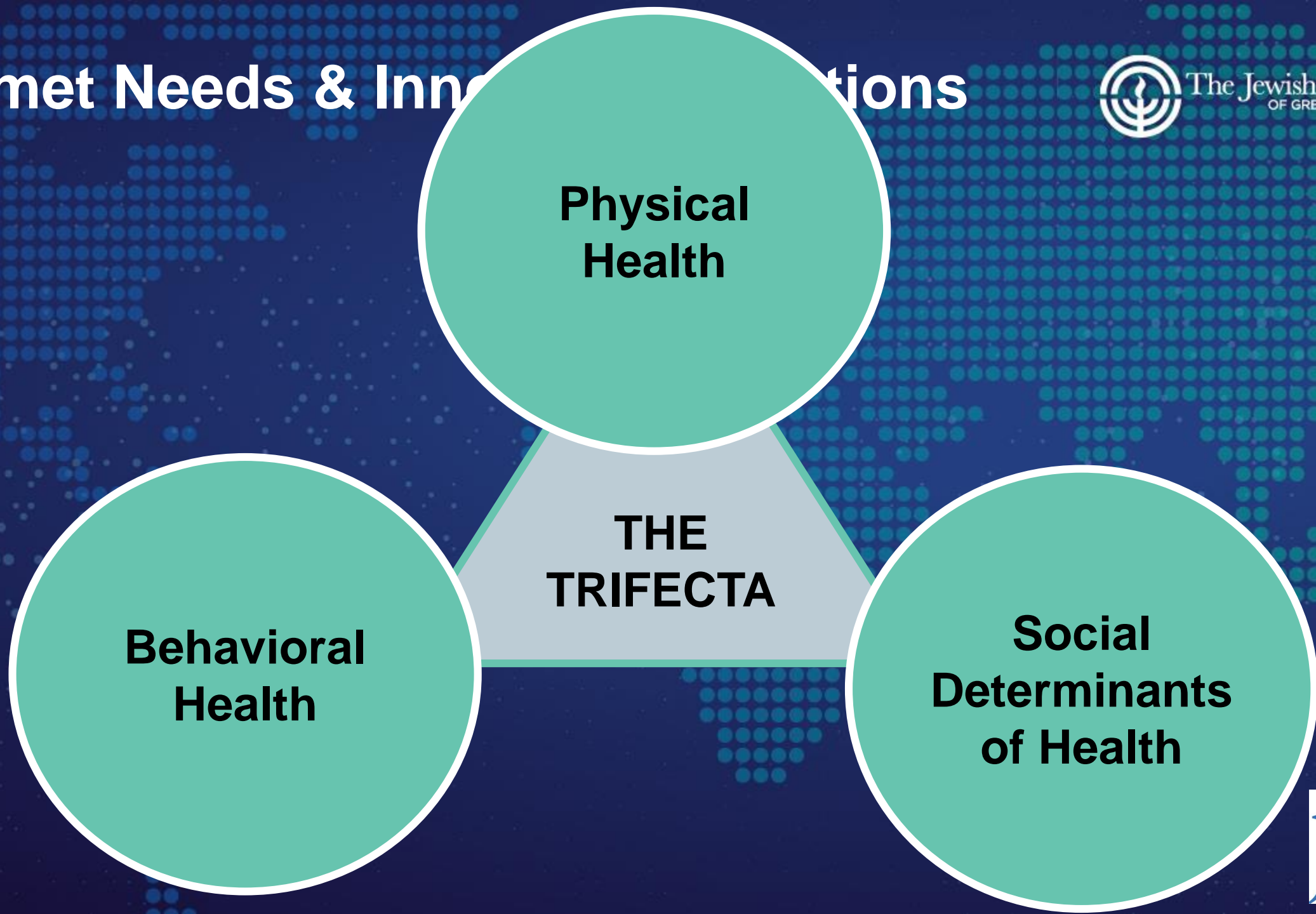
- Senior-specific organizations such as JCA and CESLC
- Lifespan organizations such as JSSA, the three JCCs, and synagogues
- Organizations that don't consider themselves old-age groups such as B'nai B'rith and Jewish War Veterans



What's Jewish about Aging?



Unmet Needs & Innovations



Unmet Needs & Innovative Solutions



**How do I pay
for all of
this?**

Technology

**Innovation
and
Collaborative
Partnerships**

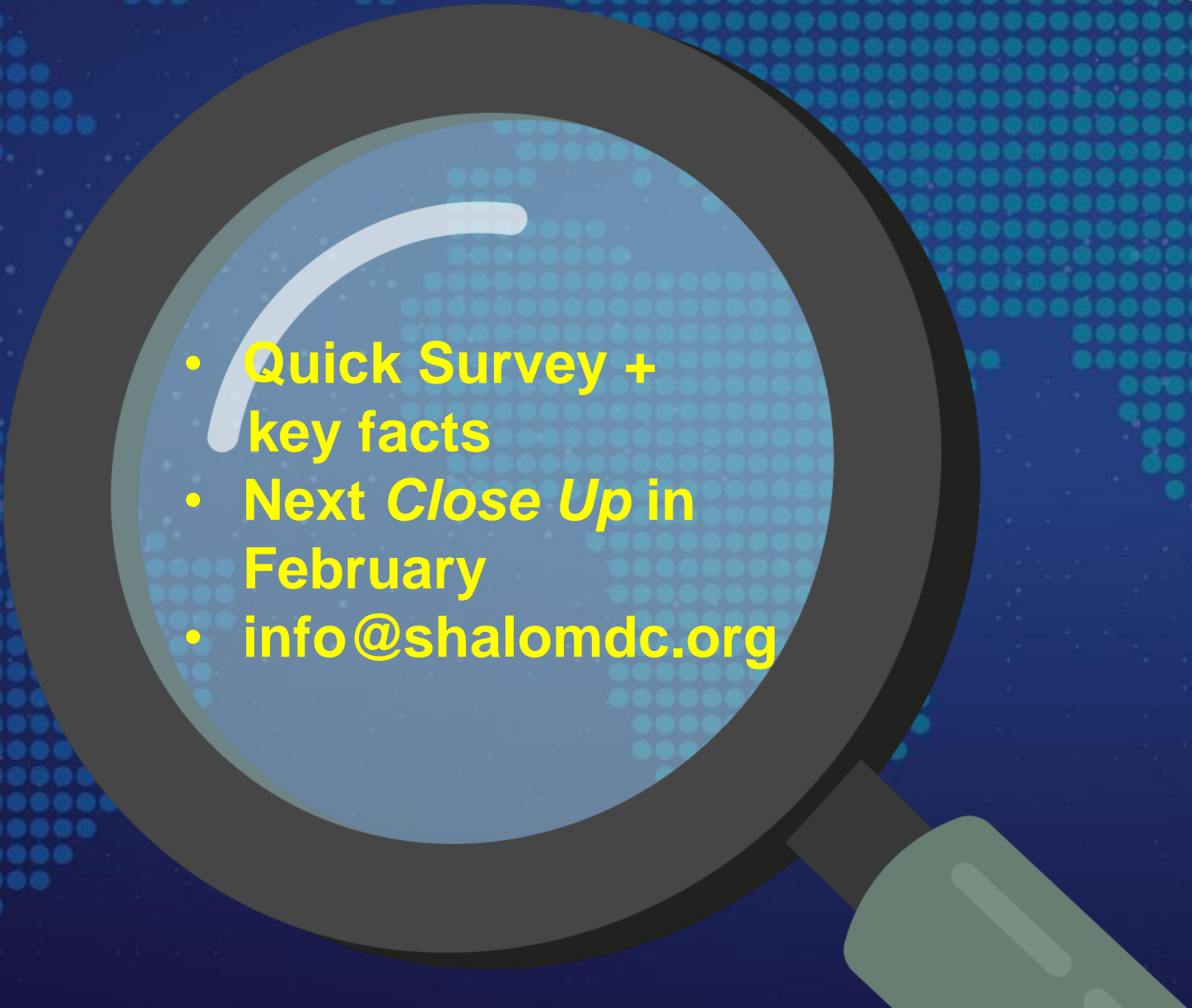


Questions & Answers



**Enter your
questions for
David and Todd
with the Q&A
button!**

What's Next?

- 
- Quick Survey + key facts
 - Next *Close Up* in February
 - info@shalomdc.org