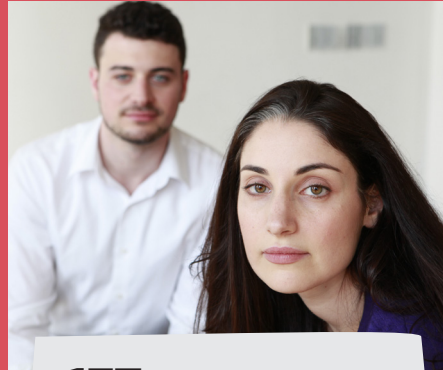


Fact Sheet

VULNERABLE POPULATIONS

The Need:

Expansion of services to the most vulnerable among us is essential to meet the growing needs of at-risk populations locally, in Israel and around the world.



137 victims of domestic abuse received free clinical services including individual and group therapy, financial planning and case management.



100,504 miles were traveled by the wheelchair accessible Elder Buses, taking older adults to doctor's appointments, shopping and on other errands.



22,978 kosher Meals on Wheels were delivered to homebound seniors.



70% of those who completed the Jewish Council for the Aging (JCA) Career Gateway program found work within 12 weeks of graduation.



9,422 children, teens and families received mental health evaluations and treatment.

