

The Needs

The six areas identified here focus on critical needs in our local and global Jewish community. At The Jewish Federation we identify, evaluate and address these priorities with unparalleled commitment, passion and sensitivity. We take seriously our responsibility to ensure that needs are met, to create a stronger, more vibrant Jewish community and to foster and strengthen our connection with Jews in Israel and around the world. These are six pressing needs in our community that The Jewish Federation addresses.

Jewish Education



Accessible and affordable Jewish education for all is a critical component for building and strengthening our Jewish community. Knowledge of traditions, values, Torah and Israel must be made accessible to all.

Through formal education programs, youth groups and adult learning, as well as informal education opportunities, summer camps, community events and other cultural programs, we can perpetuate the precious legacy that we inherited from our ancestors and bequeath it to our children.

Vulnerable Populations



Expansion of services to the most vulnerable among us is essential to meet the growing needs of at-risk populations locally, in Israel and around the world. Poverty, language barriers, lack of educational access, unemployment, mental health challenges and physical or intellectual disabilities make it challenging for these individuals to achieve and live a full and meaningful life. Caring for those in need remains an important Jewish value that we must continue to uphold.

Israel & Overseas



Unwavering support, advocacy for and education about Israel and 70 other Jewish communities around the world must be a focus for our community. We must do all that we can to ensure that Jewish identity continues to thrive and that the safety, security and well-being of Jews is maintained. No matter where they live, Jews the world over, even in the most remote parts of the globe, are connected to a network of vibrant Jewish life and compassionate citizens concerned for their well-being. We are a diverse people, and our future lies in our commitment to one another.

Emergency Response



In emergency situations, we must respond swiftly to address the immediate needs of individuals who find themselves in crisis. Communities facing hardship will always have the worldwide Jewish community to turn to for support, no matter where they are or what the situation. In times of rocket attacks on innocent Israelis, escalated anti-Semitism or natural disasters, emergency response provides respite and relief for those in harm's way, trauma counseling for victims and relief workers, activities and supplies for children and financial assistance to rebuild.

Inclusive Community



We must be a welcoming and inclusive community for all by expanding the ways in which individuals are invited and encouraged to participate in Jewish life. It can be more challenging for people with disabilities, members of the LGBT community and those in interfaith relationships to feel included in the Jewish community. Creating inclusive programs and services benefits all participants, and we are working to reduce barriers to participation.

Jewish Identity



Expanding opportunities for meaningful connections to Jewish life gives members of our community a multitude of ways to build their Jewish journey. With the changing face of the Jewish community, individuals today often struggle to feel connected to their Jewish identity and relationship to Israel. Each of us is unique and different. We must think creatively, and expand the pathways for involvement so that every Jewish individual looking for a way to connect can do so in a way that is personally meaningful.

The Jewish Federation **MAKE IT YOURS**

The Jewish Federation of Greater Washington addresses the critical needs of our local and global Jewish community.

Last year...

JEWISH EDUCATION



2,653 children attended one of six Federation-supported Jewish day schools.

VULNERABLE POPULATIONS



46,776 trips on the Elder Buses took seniors to appointments and errands.

ISRAEL AND OVERSEAS



700,000 jobless Israelis received the tools and confidence to enter the workforce.

JEWISH IDENTITY



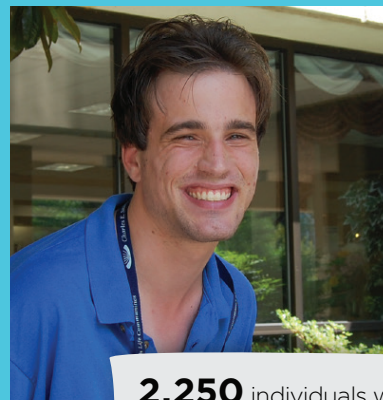
19,000 Jewish students on 11 campuses in Greater Washington were connected to Jewish life.

EMERGENCY RESPONSE



20,000 pounds of medical and shelter supplies provided life-saving support to those impacted by the earthquake in Nepal.

INCLUSIVE COMMUNITY



2,250 individuals with special needs and their families received services and support.

Together we are making a measurable impact with immeasurable heart.